

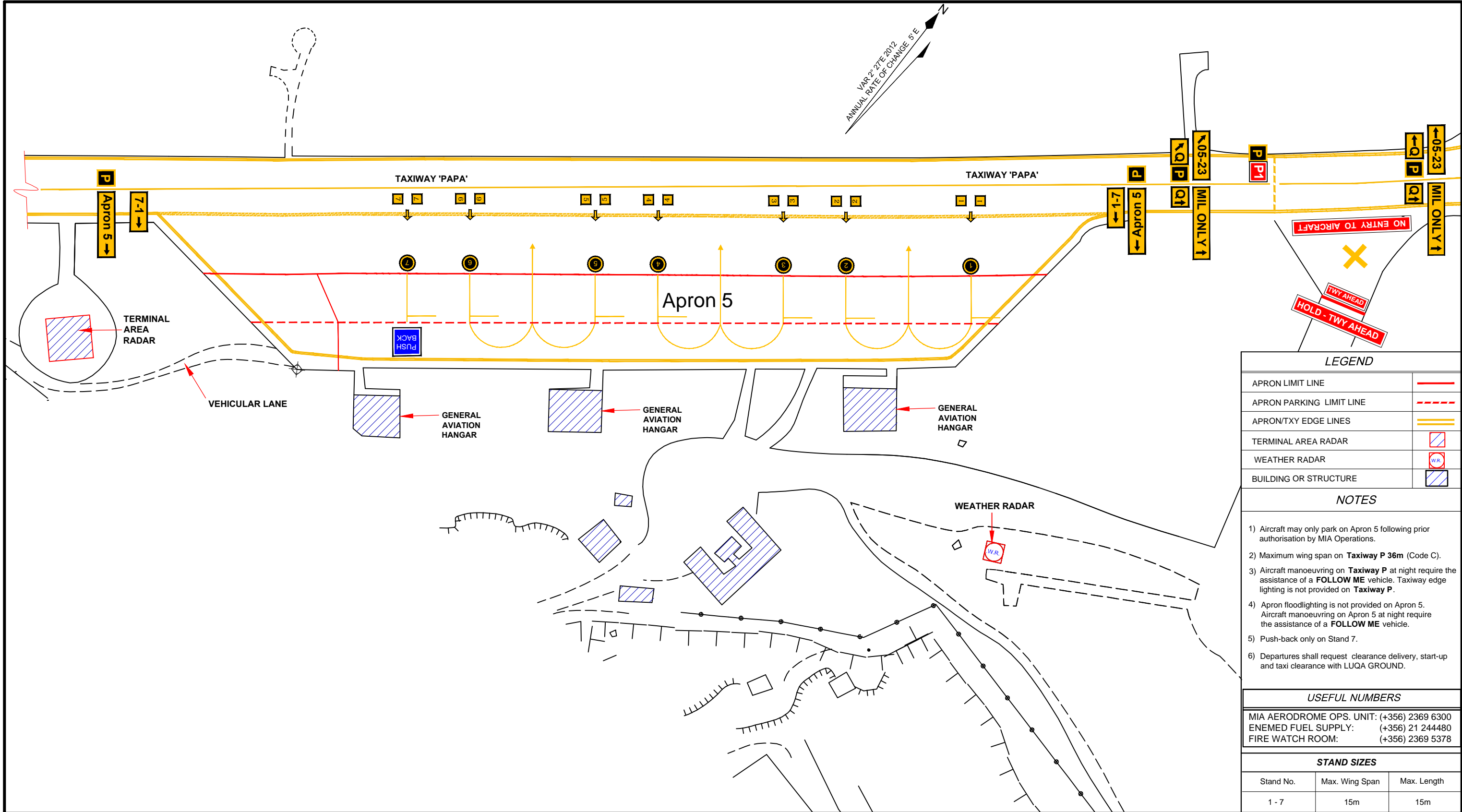
OM 3.07 AIRCRAFT PARKING CHART - ICAO (APRON 5)

ARP 35°51'27" N
14°28'39" E

ELEV 300 feet

TWR 135.1
GROUND 121.6

MALTA - LUQA



LEGEND

APRON LIMIT LINE	—
APRON PARKING LIMIT LINE	- - -
APRON/TXY EDGE LINES	==
TERMINAL AREA RADAR	◻ (diagonal lines)
WEATHER RADAR	◻ (WR)
BUILDING OR STRUCTURE	◻ (hatched)

- NOTES**
- 1) Aircraft may only park on Apron 5 following prior authorisation by MIA Operations.
 - 2) Maximum wing span on Taxiway P 36m (Code C).
 - 3) Aircraft manoeuvring on Taxiway P at night require the assistance of a FOLLOW ME vehicle. Taxiway edge lighting is not provided on Taxiway P.
 - 4) Apron floodlighting is not provided on Apron 5. Aircraft manoeuvring on Apron 5 at night require the assistance of a FOLLOW ME vehicle.
 - 5) Push-back only on Stand 7.
 - 6) Departures shall request clearance delivery, start-up and taxi clearance with LUQA GROUND.

USEFUL NUMBERS

MIA AERODROME OPS. UNIT:	(+356) 2369 6300
ENEMED FUEL SUPPLY:	(+356) 21 244480
FIRE WATCH ROOM:	(+356) 2369 5378

STAND SIZES

Stand No.	Max. Wing Span	Max. Length
1 - 7	15m	15m

Drawing Office ref: MIACA-1032-2006
MALTA INTERNATIONAL AIRPORT plc